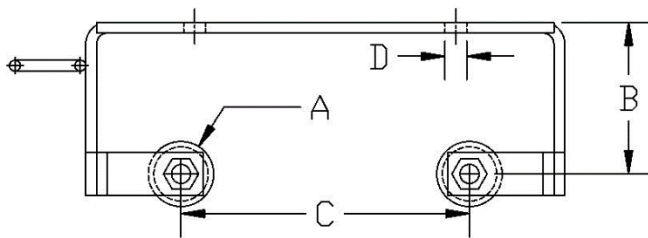


ABSTRACT

This document will provide you with the dimensions and part numbers of the 304 and 316 stainless upper guide rail brackets used with HOMA autocouplings.



Dimensions				
ID Number	A	B	C	D
A-1	1/2"	4 3/4"	3 9/16"	1/2"
A-2	1"	2 3/8"	4 3/4"	1/2"
A-3	1 1/2"	3 1/2"	6 11/16"	1/2"
A-5	1"	2 3/8"	5 1/2"	1/2"
A-6	1 1/2"	3 1/2"	7 5/8"	1/2"
A-7	2"	4 1/2"	10 3/4"	1/2"
A-8	2 1/2"	4 3/4"	15 3/8"	1/2"
A-9	2 1/2"	4 3/4"	15 3/8"	1/2"
A-10	2 1/2"	4 3/4"	17"	1/2"

plus or minus 1/8"

Description	Part Number	316 SS	304 SS	ID Number
1 1/4" Autocoupling	8604001	8732002	8732302	A-2
1 1/4" Autocoupling with Check Valve	8604002	8732002	8732302	A-2
1 1/2 x 2" Autocouplings	8604000	8732004	8732304	A-1
2" GRP 10-50 / TP 30/49 Autocoupling	8604005	8732004	8732304	A-1
2" Stainless Steel Autocoupling	8604011	8732002	8732302	A-2
2" GRP 59/79/118 Autocoupling	8604012	8732005	8732305	A-3
2 x 2 1/2 Stainless Steel Autocoupling	8604014	8732002	8732302	A-2
2" Autocoupling w/ 1" Rail	8604019	8732002	8732302	A-2
2 1/2" TP50 Autocoupling	8604015	8732002	8732302	A-2
2 1/2" Flanged TP50 Autocoupling	8604015X2	8732002	8732302	A-2
2 1/2" CTP50 SS Autocoupling	8604017	8732013	n/a	A-5
3" TP Series Autocoupling w/elbow	8604035	8732005	8732305	A-3
3" A Series Flanged w/elbow	8604025	8732005	8732305	A-3
3 x 4" Autocoupling flanged w/elbow	8604060	8732006	8732306	A-6
4" Autocoupling w/elbow	8604055	8732006	8732306	A-6
4 x 6" Autocoupling w/elbow	8603632	8732007	8732307	A-7
6" Autocoupling w/elbow	8604070	8732007	8732307	A-7
6 x 8" Autocoupling w/elbow	8604105	8732008	8732308	A-8
8" Autocoupling	8604100.01	8732008	8732308	A-8
8 x 10" Autocoupling w/elbow	8604120	8732009	8732309	A-9
10" Autocoupling w/elbow	8604110	8732009	8732309	A-9
10 x 12" Autocoupling w/elbow	8604130	8732010	8732310	A-10
12" Autocoupling	8604090	8732010	8732310	A-10
12" Autocoupling ANSI GCF	8604092	8732010	8732310	A-10